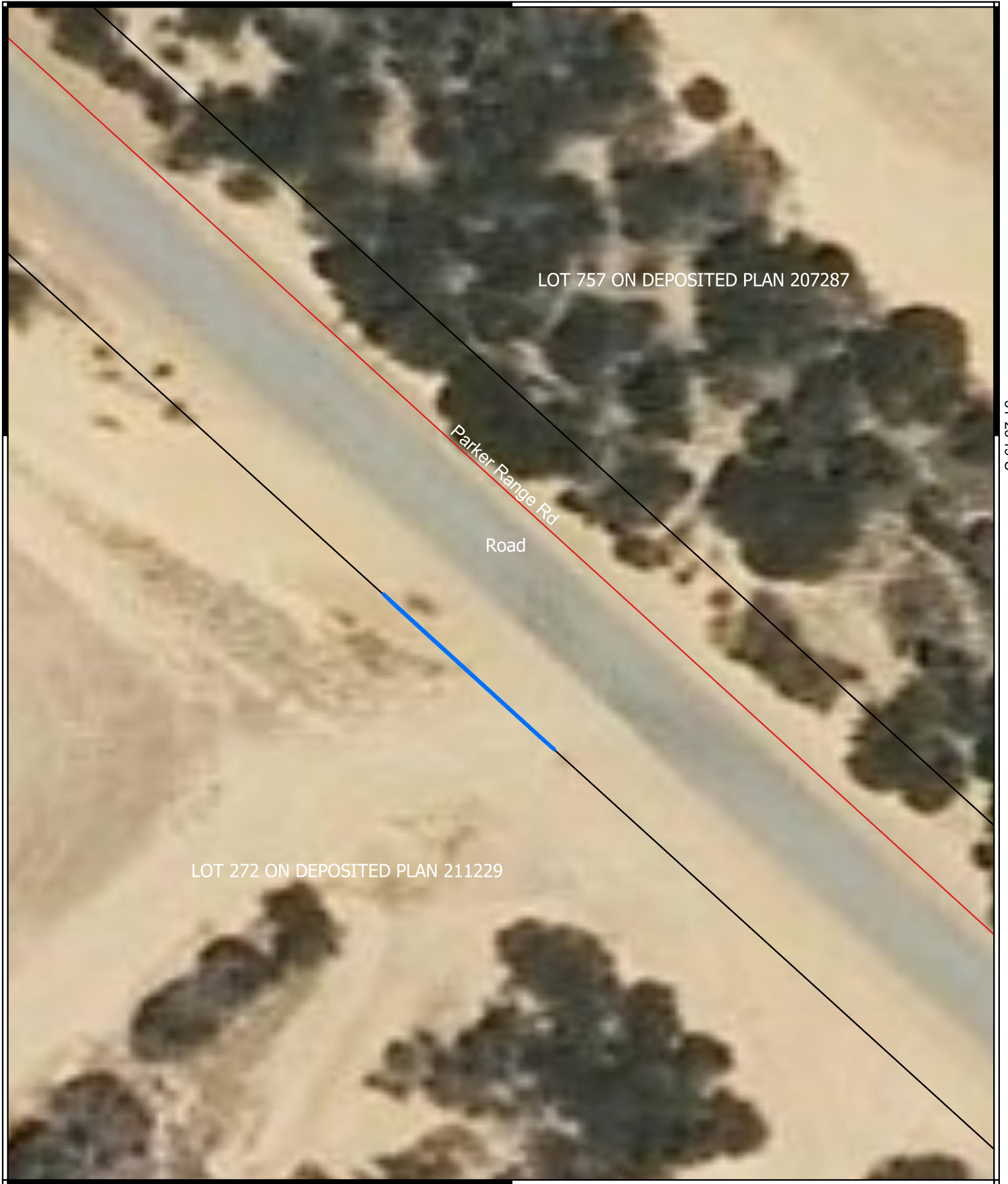


CPS 10544/1 - Map G

119°14'20"E


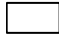

31°25'19"S

31°25'19"S



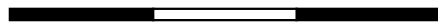
119°14'20"E

Legend

-  CPS areas applied to clear
-  Land Tenure (LGATE_226) - SLIP
-  Local Government Authorities



0 7.5 15 22.5 m



1:300

Projection: GDA2020



GOVERNMENT OF
WESTERN AUSTRALIA